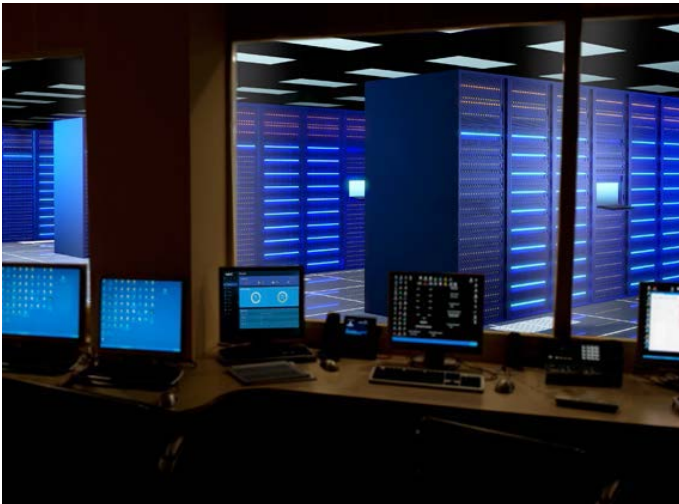


# QX-S5200 Series PoE+ Gigabit Ethernet Switches



## Overview

NEC's QX-S5200 Series Power over Ethernet Plus (PoE+) Gigabit switches offer businesses the flexibility to easily deploy PoE devices wherever needed. These versatile switches can be used as edge devices in a Software Defined Network (SDN) or they can be standalone. The QX-S5200 series fully supports NEC's ProgrammableFlow Controller (PFC) Edge Switch Automation capability, and can be configured and managed directly through the PFC's Graphical User Interface (GUI).

Since a PoE switch enables network cables to carry electrical power, installing additional power outlets is not required – saving time and expense. Another advantage is scalability – PoE enables quick and efficient deployment of network devices.

## Main Product Features

- > 24 and 48 PoE+ 10/100/1000 Ethernet Ports (can connect to IP phones and other PoE devices that require up to 30W)
- > 4 Gigabit SFP Uplink ports
- > Support for L2 and L3 forwarding, QoS, Security, Multicast & VLAN

- > Support Static and RIP policy-based Routing functions
- > CLI and WebGUI management console
- > SDN compatible (OpenFlow version 1.3.1)
- > High Speed stack connection function (Intelligent Resilient Framework)

## At a Glance

- > Versatile Power over Ethernet Plus (PoE+) switches that can be utilized in SDN (OpenFlow) network environments as edge devices or standalone
- > Connects to IP telephones or other devices that require PoE
- > Supports NEC's ProgrammableFlow Controller Edge Automation capability which:
  - Extends some of the SDN functions to non-OpenFlow switches
  - Simplifies configuration and management of switch
- > Saves time and expense by not having to install electrical power wiring
- > Offers the flexibility of placing PoE devices where needed most and ability to relocate them easily
- > Can be managed by the SDN Controller, WebGUI management console or Command Line Interface (CLI)



QX-S5200 Series WebGUI



## Specifications

Features		S5224GT-4X-PW	S5248GT-4X-PW
<b>Performance</b>	Switching capacity [bps]	128.0G	176.0G
	Transfer rate [pps]	95.2M	130.9M
	Switching method	S&F	
	MAC address table	16K	
	Routing table (IPv4/IPv6)	512/256	
<b>Interface</b>	ARP table	1K	
	10Gbe	SFP slot	-
		SFP+ slot	4
	40Gbe	QSFP+ slot	-
	Console Port		√
<b>PoE+</b>	Number of power feedable interfaces	24	48
	Power feeding standard	IEEE802.3at	
	Maximum power supply amount per port	30.0W	
	Maximum power supply amount per device	370.0W	
<b>IRF</b>	IRF stack version	IRFv2	
	Maximum number of IRF stacks	6	
	MAD/ISSU	√ / -	
<b>VLAN</b>	IEEE802.1Q	√	
	Port VLAN	√	
	Protocol VLAN	√	
	Voice VLAN	√	
	Max. number of VLAN [number of settable IP addresses]	4094[32]	
	VLAN mapping	√	
	QinQ	√	
<b>Port function</b>	Auto Negotiation/fixed speed and duplex (full/half)	√ / √	
	Auto MDI • MDIX/ fixed MDIX	√ / √	
	Flow control (IEEE802.3X)	√	
	EAP transmitted/BPDU transmitted	√ / √	
	Port isolate	√	
	Packet transfer suppression	B/M/U	
	Storm-constrain	B/M/U	
	Jumbo Frame (byte)	10000	
	Loop detection (multi port loop supported)	√	
	One-way link detection DLDP	√	
	Ethernet OAM (IEEE802.3ah)	√	
	Link aggregation (LACP supported)	√	
<b>Spanning tree</b>		S/R/M/P	
<b>Ring protocol (RRPP)</b>		√	
<b>Packet filter (ACL)</b>		√	
<b>IPv6 management</b>		√	
<b>QoS</b>	PQ	√	
	WRR	√	
	Bandwidth control	LR/CAR/GTS	
	Trust/Marking	√ / √	
	Number of QoS classes	8	

√ = Available / - = Not Available

## Specifications

Features		S5224GT-4X-PW	S5248GT-4X-PW
<b>Security</b>	802.1X authentication		√
	MAC address authentication		√
	Web authentication		√
	Triple authentication		√
	Port security		√
	Dynamic VLAN		PORT/MAC
<b>Routing related</b>	Local authentication		√
	Static		√
	RIP		v1/v2/ng
	Policy-Based Routing		√
	VRRP		√
	BFD		√
<b>Multicasting</b>	Multicast VLAN		S/R/M/P
	IGMPv1/v2/v3 snooping		√
	MLDv1/v2 snooping		√
<b>SDN Ready</b>	SDN supported	Edge Automation and OpenFlow 1.3.1	
	Maximum flow entry	500	
<b>Management function</b>	telnet/ssh/WEB console	√ / √ / √	
	FTP • TFTP client/FTP server	√ / √	
	LLDP	√	
	DHCP	√	
	NTP client/NTP server	√	
	Syslog	√	
	Log file	√	
	SNMPv1/v2c/v3	√	
	Standard MIB, Private MIB	√	
	RMON	√	
	sFlow	√	
	Port mirroring	√	
	<b>Eco function</b>	Scheduled task	√
IEEE802.3az		√	
<b>Physical specification</b>	External dimension (W x D x H) [mm]	440 x 300 x 43.6	440 x 360 x 43.6
	Weight	5.4kg	6.4kg
	AC power input (50/60Hz)	100~240V (90~264V)	
	Maximum power consumption (PoE fed power included)	475W	502W
	Fanless	-	-
	Operating temperature/humidity (non-condensing req.)	0~45°/10~90%	
<b>VCCI ClassA / RoHS support</b>		√ / √	

√ = Available / - = Not Available



# QX-S5200 Series PoE+ Gigabit Ethernet Switches

## S5224GT-4GXPW



## S5248GT-4X-PW



EMEA (Europe, Middle East, Africa)  
NEC Enterprise Solutions  
[www.nec-enterprise.com](http://www.nec-enterprise.com)

For further information please contact NEC EMEA or: