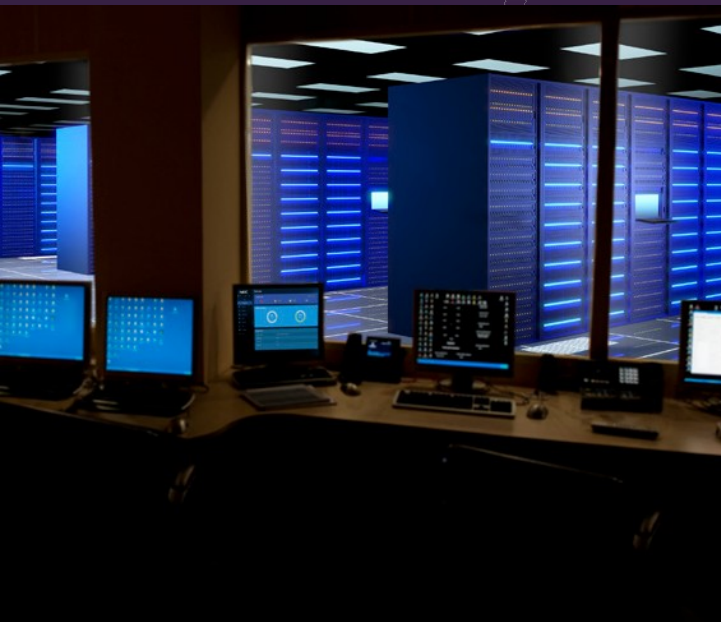


QX-S4300

10 Gigabit Ethernet Switches



At a Glance

- Low cost 10 Gigabit Ethernet switches with 8 or 14 copper ports and 2 SFP+ uplinks
- In conjunction with QX-S5200 series (1G PoE access switch with 10G Ethernet up-links) and QX-S4100 and QX-S1000 series (1G PoE access switch with 1G Ethernet up-links) can be used to implement a complete Enterprise network
- Attractive cost/port make these switches ideal where high 10 G throughput is required, as an example in HCI node aggregation

Overview

NEC's QX-S4300 Series Ten Gigabit Ethernet switches offer businesses the flexibility to easily deploy. These versatile switches can be used in a Software Defined Network (SDN) or they can be standalone. The QX-S4300 series fully supports NEC's Network Operation Engine and can be configured and managed directly through the NOE's Graphical User Interface (GUI).

I Main Product Features

- 8 or 14 Ethernet ports 10G/5G/2.5G/1000BASE-T autosensing
- 2 Ethernet ports 10Gigabit SFP+
- 1 Management Ethernet port
- USB and Console ports
- Support for L2 and basic L3 forwarding, QoS, Security, Multicast, & VLAN
- Support Static Routing functions
- CLI and WebGUI management console
- High Speed stack connection function (Intelligent Resilient Framework)



Specifications

Features			S4308XT-2X	S4314XT-2X	
Performance	Switching Capacity [bps]		200.0G	320.0G	
	Transfer Rate [pps]		148.8M	238.0M	
	Switching Method		Store & Forward		
	MAC address table		32K		
	Routing Table (IPv4/IPv6)		16K/8K		
	ARP table		7.5K		
Interface	100 M	10/100BASE-TX	-	-	
	1GbE	10/100/1000BASE-T	-	-	
		SFP slot	-	-	
	10 GbE	1/10GBASE-T	8	14	
		SFP+ Slot	2	2	
	40 GbE	QSFP+ Slot	-	-	
	Number of extension card slots		-	-	
	Management port		1	1	
	Console port		○	○	
IRF stack	IRF stack version		9		
	MAD/ISSU		○/○		
VLAN	IEEE 802.1Q		○		
	Port VLAN		○		
	Protocol VLAN		○		
	IP Subnet-based VLAN		-		
	Isolate-user vlan		○		
	Voice VLAN		○		
	Maximum number of VLAN [number of settable IP addresses]		4094[1024]		
	VLAN mapping		○		
	QinQ		○		
	Auto Negotiation/ fixed speed and duplex (full/half)		○/○		
Port Functionality	Auto MDI • MDIX/ fixed MDIX		○/○		
	Flow Control (IEEE 802.3X)		○		
	EAP transmission/BPDU transmission		○/○		
	Port isolate		○		
	Packet transfer suppression		B/M/U		
	Storm-Constrain		B/M/U		
	Jumbo Frame (byte)		10000		
	Loop Detection (multi port loop supported)		○		
	One-Way Link Detection (DLDP)		○		
	Ethernet OAM (IEEE 802.3ah)		-		
	CFD (IEEE 802.1ag)		-		
	Link Aggregation (LACP support)		○		
	Spanning Tree			S/R/M/P	
	Ring Protocol (RRPP)			○	
Packet Filter (ACL)			○		

Specifications (cont.)

Features		QX-S4308XT-2X	QX-S4314XT-2X
IPv6 Management			○
QoS	SPQ/WRR/WFQ/WRED		○/○/-/-
	Bandwidth control		LR/CAR/GTS
	Trust/Marking		○/○
	Number of QoS classes		8
Security	802.1X Authentication		-
	MAC address authentication		-
	Web Authentication		-
	Multi-step authentication		-
	Triple authentication		-
	Port Security		-
	Dynamic VLAN		-
	Local Authentication		○
Routing Related	Static		○
	RIP		-
	OSPF		-
	BGP		-
	Policy-Based Routing		-
	VRRP		-
	BFD		○
	VRF-Lite (MCE)		-
Multicast	Multicast VLAN		○
	IGMPv1/v2/v3 snooping		○
	MLDv1/v2 snooping		○
	IGMPv1/v2/v3		-
	MLDv1/v2		-
	PIM-SM/PIM-SSM		-
Tunnel			-
VXLAN/EVPN			-
NetMeister			-
management function	TELNET/SSH/WEB console		○/○/-
	FTP • TFTP client/FTP server		○/○
	LLDP		○
	DHCP		C/R/SV/SN
	NTP Client/NTP Server		○/-
	Syslog		○
	Log file		○
	SNMPv1/v2c/v3		○
	Standard MIB、Private MIB		○
	RMON		○
	sFlow		○
	Port mirroring		○
Eco-function	EEE(IEEE802.3az)		-
	Scheduled task		○

Specifications (cont.)

Features		QX-S4308XT-2X	QX-S4314XT-2X
Physical specification	External dimension (W x D x H) [mm]	440 x 260 x 43.6	
	Weight	3.6kg	3.7kg
	AC power input [50/60 Hz] (Rating / Maximum)	100~240V (90~290V)	
	Maximum Power Consumption	44W	60W
	Redundant power source	-	
	Fanless	-	
Operating temperature/humidity (non-condensing required)		0~45°C/10~90%	
USB Memory		USB-2G	
VCCI ClassA / RoHS supported		o/o	

Legend: o supported
- not supported

QX-S4308XT-2X



QX-S4314XT-2X



For further information please contact your local NEC representative or:

North America (USA)
NEC Corporation of America
www.necam.com

South Asia (Singapore)
NEC Asia Pacific
www.nec.com.sg

Corporate Headquarters
(Japan) NEC Corporation
www.nec.com

Oceania (Australia)
NEC Australia Pte Ltd
www.nec.com.au

EMEA (Europe, Middle East, Africa)
NEC Enterprise Solutions
www.nec-enterprise.com

About NEC Corporation: NEC Corporation is one of the world's leading providers of Internet, broadband network and enterprise business solutions dedicated to meeting the specialized needs of its diverse and global base of customers. NEC delivers tailored solutions in the key fields of computer, networking and electron devices, by integrating its technical strengths in IT and Networks. The NEC Group employs more than 150,000 people worldwide. For additional information, please visit the NEC home page at: <http://www.nec.com>

January 18 © 2017 NEC Corporation. NEC is a registered trademark of NEC Corporation. All rights reserved. Other product or service marks mentioned are the trademarks of their respective owners. Models may vary for each country. Due to continuous improvements this specification is subject to change without notice.



© Copyright 2020. All Rights Reserved.