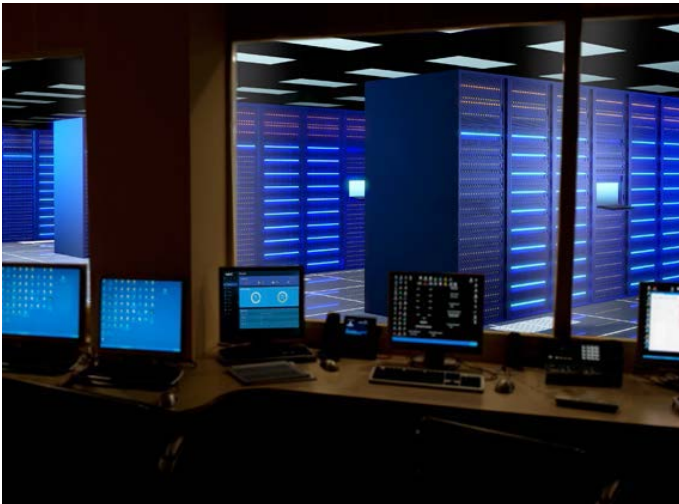


QX-S1000 Series PoE+ Gigabit Ethernet Switches



Overview

NEC's QX-S1000 Series Power over Ethernet Plus (PoE+) Giga-bit switches offer businesses the flexibility to easily deploy PoE devices wherever needed. These versatile switches can be used as edge devices in a Software Defined Network (SDN) or they can be standalone. The QX-S1000 series fully supports NEC's ProgrammableFlow Controller (PFC) Edge Switch Automation capability, and can be configured and managed directly through the PFC's Graphical User Interface (GUI).

Since a PoE switch enables network cables to carry electrical power, installing additional power outlets is not required – saving time and expense. Another advantage is scalability – PoE enables quick and efficient deployment of network devices

Main Product Features

- > 8, 16 and 24 PoE+ 10/100/1000 Ethernet Ports (can connect to IP phones and other PoE devices that require up to 30W)
- > 2 or 4 Gigabit SFP Uplink ports
- > Support for L2 forwarding, QoS, Security, Multicast & VLAN
- > CLI and webGUI management console

At a Glance

- > Versatile Power over Ethernet Plus (PoE+) switches that can be utilized in SDN network environments as edge devices or standalone
- > Connects to IP telephones or other devices that require PoE
- > Supports NEC's ProgrammableFlow Controller Edge Automation capability which:
 - Extends some of the SDN functions to non-OpenFlow switches
 - Simplifies configuration and management of switches
- > Saves time and expense by not having to install electrical power wiring
- > Offers the flexibility of placing PoE devices where needed most and ability to relocate them easily
- > Can be managed by the SDN Controller, WebGUI management console or Command Line Interface (CLI)



QX-S1000 Series WebGUI

Specifications

Features		S1008GT-2G-PW	S1016GT-4G-PW	S1024GT-4G-PW	
Performance	Switching capacity [bps]	20.0G	40.0G	56.0G	
	Transfer rate [pps]	14.8M	29.7M	41.6M	
	Switching method			S&F	
	MAC address table			8K	
	Routing table (IPv4/IPv6)			-	
	ARP table			32	
Interface	1Gbe	10/100-1000BASE-T	8	16	24
		SFP slot	2	4	4
	Console Port		√	√	√
PoE+	Number of power feedable interfaces	8	16	24	
	Power feeding standard			IEEE802.3af/at	
	Maximum power supply amount per port			30.0W	
	Maximum power supply amount per device	65.0W	124.0W	180.0W	
IRF	IRF stack version			-	
	Maximum number of IRF stacks			-	
	MAD/ISSU			-	
VLAN	IEEE802.1Q			√	
	Port VLAN			√	
	Protocol VLAN			-	
	Voice VLAN			√	
	Max. number of VLAN			4094	
	VLAN mapping			-	
	QinQ			-	
Port function	Auto Negotiation/fixed speed and duplex (full/half)			√ / √	
	Auto MDI • MDIX/ fixed MDIX			√ / √	
	Flow control (IEEE802.3X)			√	
	EAP transmitted/BPDU transmitted			√ / √	
	Port isolate			√	
	Packet transfer suppression			B/M/U	
	Storm-constrain			-	
	Jumbo Frame (byte)			9600	
	Loop detection (multi port loop supported)			√	
	One-way link detection DLDP)			√	
	Ethernet OAM (IEEE802.3ah)			-	
	Link aggregation (LACP supported)			√	
Spanning tree				S/R/M/P	
Ring protocol (RRPP)				-	
Packet filter (ACL)				√	
IPv6 management				-	
QoS	SPQ			√	
	WRR			√	
	Bandwidth control			LR	
	Trust/Marking			√	
	Number of QoS classes			8	

√ = Available / - = Not Available

Specifications

Features	S1008GT-2G-PW	S1016GT-4G-PW	S1024GT-4G-PW	
Security	802.1X authentication		√	
	MAC address authentication		√	
	Web authentication		-	
	Triple authentication		-	
	Port security		√	
	Dynamic VLAN		PORT/MAC	
	Local authentication		-	
Routing related	Static		-	
	BFD		-	
Multicasting	Multicast VLAN		-	
	IGMPv1/v2/v3 snooping		√	
	MLDv1/v2 snooping		-	
SDN Ready	SDN supported		Edge Automation	
	Maximum flow entr		16K	
	telnet/ssh/WEB console		√ / √ / √	
	FTP • TFTP client/FTP server		√ / √	
	LLDP		√	
	DHCP		C/SV	
	NTP client/NTP server		√ / -	
Management function	Syslog		√	
	Log fil		-	
	SNMPv1/v2c/v3		√	
	Standard MIB, Private MIB		√	
	RMON		√	
	sFlow		-	
	Port mirroring		√	
Eco function	Scheduled task		-	
Physical specification	External dimension (W x D x H) [mm]	330 x 231 x 43.6	440 x 238 x 43.6	
	Weight	2.1 kg	3.5kg	
	AC power input (50/60Hz)	100~240V (90~264V)		
	Max. power consumption (incl. PoE fed power)	94W	166W	240W
	Fanless	√	-	
	Operating temp/humidity (non-condensing req.)	0~50°/10~90%		

√ = Available / - = Not Available



S1008GT-2G-PW



S1016GT-4G-PW



S1024GT-4G-PW



For further information please contact your local NEC representative or:

Corporate Headquarters (Japan)
NEC Corporation
www.nec.com

Asia Pacific
NEC Asia Pacific
www.nec.com.sg

EMEA (Europe, Middle East, Africa)
NEC Enterprise Solutions
www.nec-enterprise.com

North Americas (USA, Canada)
NEC Corporation of America
www.necam.com

Latin Americas (Brazil)
NEC Latin America
br.nec.com