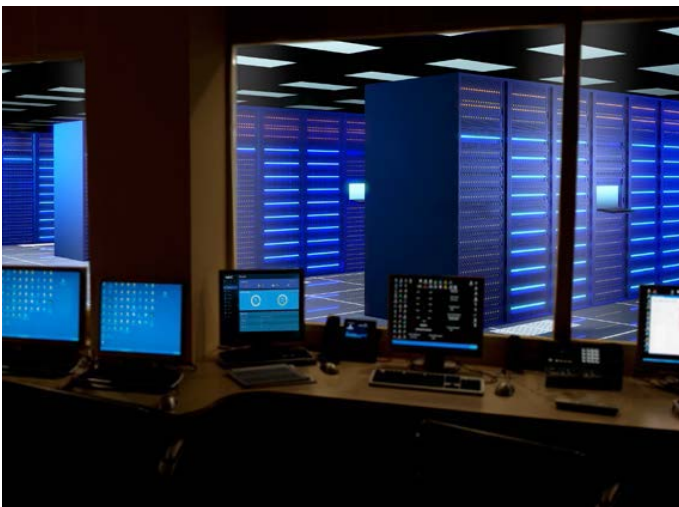


# QX-S1000 non-PoE Series Gigabit Ethernet Switches



## At a Glance

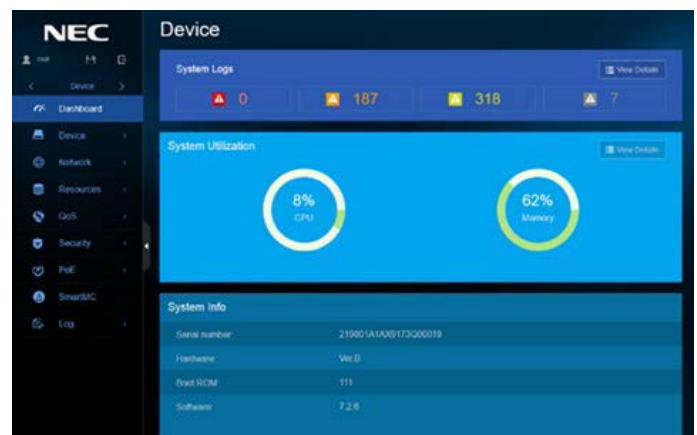
- > Versatile Ethernet switches that can be utilized in SDN network environments as edge devices or standalone
- > Used to complement the QX-S1000 PiE switches in applications where the PoE feature is not required
- > Supports NEC's ProgrammableFlow Controller Edge Automation capability which:
  - Extends some of the SDN functions to non-OpenFlow switches
  - Simplifies configuration and management of switch
- > Can be managed by the SDN Controller, WebGUI management console or Command Line Interface (CLI)

## Overview

NEC's QX-S1000 Series switches can be used as edge devices in a Software Defined Network (SDN) or they can be standalone. The QX-S1000 series fully supports NEC's ProgrammableFlow Controller (PFC) Edge Switch Automation capability, and can be configured and managed directly through the PFC's Graphical User Interface (GUI).

## Main Product Features

- > 8, 16, 24 and 48 10/100/1000 Ethernet Ports
- > 2 or 4 Gigabit SFP Uplink ports
- > Support for L2 forwarding, QoS, Security, Multicast & VLAN
- > CLI and webGUI management console



QX-S1000 Series WebGUI



## Specifications

Features		S1008GT-2G	S1016GT-4G	S1024GT-4G	S1048GT-4G	
<b>Performance</b>	Switching capacity [bps]	20.0G	40.0G	56.0G	104.0G	
	Transfer rate [pps]	14.8M	29.7M	41.6M	77.3M	
	Switching method	S&F				
	MAC address table	8K			16K	
	Routing table (IPv4/IPv6)	-				
	ARP table	32				
<b>Interface</b>	1Gbe	10/100-1000BASE-T	8	16	24	48
		SFP slot	2	4	4	4
	Console Port		√	√	√	√
<b>PoE+</b>	Number of power feedable interfaces		-	-	-	-
	Power feeding standard		-			
	Maximum power supply amount per port		-			
	Maximum power supply amount per device		-			
<b>IRF</b>	IRF stack version		-			
	Maximum number of IRF stacks		-			
	MAD/ISSU		-			
<b>VLAN</b>	IEEE802.1Q		√			
	Port VLAN		√			
	Protocol VLAN		-			
	Voice VLAN		√			
	Max. number of VLAN (nr of settable IP addresses)		4094			
	VLAN mapping		-			
	QinQ		-			
<b>Port function</b>	Auto Negotiation/fixed speed and duplex (full/half)		√ / √			
	Auto MDI • MDIX/ fixed MDIX		√ / √			
	Flow control (IEEE802.3X)		√			
	EAP transmitted/BPDU transmitted		√ / √			
	Port isolate		√			
	Packet transfer suppression		B/M/U			
	Storm-constrain		-			
	Jumbo Frame (byte)		9600			
	Loop detection (multi port loop supported)		√			
	One-way link detection DLDP		√			
	Ethernet OAM (IEEE802.3ah)		-			
	Link aggregation (LACP supported)		√			
<b>Spanning tree</b>		S/R/M				
<b>Ring protocol (RRPP)</b>		-				
<b>Packet filter (ACL)</b>		√				
<b>IPv6 management</b>		-				
<b>QoS</b>	SPQ		√			
	WRR		√			
	Bandwidth control		LR			
	Trust/Marking		√			
	Number of QoS classes		8			

√ = Available / - = Not Available

## Specifications

Features		S1008GT-2G	S1016GT-4G	S1024GT-4G	S1048GT-4G
<b>Security</b>	802.1X authentication			√	
	MAC address authentication			√	
	Web authentication			-	
	Triple authentication			-	
	Port security			√	
	Dynamic VLAN			PORT/MAC	
	Local authentication			√	
<b>Routing related</b>	Static			-	
	BFD			-	
<b>Multicasting</b>	Multicast VLAN			-	
	IGMPv1/v2/v3 snooping			√	
	MLDv1/v2 snooping			-	
<b>SDN Ready</b>	SDN supported		Edge Automation		
	Maximum flow entry		8K		16K
<b>Management function</b>	telnet/ssh/WEB console			√ / √ / √	
	FTP • TFTP client/FTP server			√ / √	
	LLDP			√	
	DHCP			C/SV	
	NTP client/NTP server			√ / -	
	Syslog			√	
	Log file			-	
	SNMPv1/v2c/v3			√	
	Standard MIB, Private MIB			√	
	RMON			√	
	sFlow			-	
	Port mirroring			√	
	<b>Eco function</b>	Scheduled task			-
<b>Physical specification</b>	External dimension (W x D x H) [mm]	266 x 161 x 43.6	440 x 169 x 43.6		440 x 238 x 43.6
	Weight	1.0 kg	2.1 kg	2.2 kg	3.5kg
	AC power input (50/60Hz)	100~240V (90~264V)			
	Max. power consumption (incl. PoE fed power)	12W	20W	28W	47W
	Fanless		√		-
	Operating temp/humidity (non-condensing req.)	0~50°/10~90%			

√ = Available / - = Not Available



S1008GT-2G



S1016GT-4G



S1024GT-4G



S1048GT-4G



For further information please contact your local NEC representative or:

**Corporate Headquarters (Japan)**  
NEC Corporation  
[www.nec.com](http://www.nec.com)

**Asia Pacific**  
NEC Asia Pacific  
[www.nec.com.sg](http://www.nec.com.sg)

**EMEA (Europe, Middle East, Africa)**  
NEC Enterprise Solutions  
[www.nec-enterprise.com](http://www.nec-enterprise.com)

**North Americas (USA, Canada)**  
NEC Corporation of America  
[www.necam.com](http://www.necam.com)

**Latin Americas (Brazil)**  
NEC Latin America  
[br.nec.com](http://br.nec.com)